



BOUGRES D'ÂNES

Hike with a donkey on seven days

Rent of a donkey for 4 days : 165 €

Not accompagnied hike

" In the course of the water"

KNOW YOUR ROAD ...

We advise you to arrive the day before your hike and suggest you welcoming between 16 and 17 o'clock. So, we shall take time to present you your travelling companions and to describe every day of hike by showing you the places where it is necessary to be a little more attentive, places to be visited, the good places where to rest you, to drink a glass... everything, everything so that you took the maximum of pleasure during your hike. You can also ask us the questions which interest you, all this in front of a small glass of welcome.

If you cannot or do not wish to arrive the day before, we wait for you in the morning at **9 am** with a small coffee to wake you before the great departure and to present you the differents days of hike.

We give you then your file " ride with an ass ", including :

- Cards IGN in the 1/25000th with your hike (if you wish to keep cards IGN in recollection, we resell them to you new at coutant price; it is enough to let it to us know rather quickly). It's preferable (but not necessities)to know how to read a card IGN.
- The roadbook extremely detaile by each of your circuits.
- A small guide of advices to drive a donkey.

KNOW YOUR DONKEY

We fetch together donkeys in the meadow to learn you to put them their « licol ».

We shall take time to present you your donkeys so that a good relation settles down between you.

We explain you how to take charge in detail of your donkeys (with brushing, with cleaning out feet) and give you a small bag with all the necessary material.

We show you how to equip your donkeys by giving you the indispensable advices so that your donkeys do not injure themselves: donkeys are equipped with a packsaddle of portorage with crosspieces on which we hang on two big bags which are supplied to you and in which you can store your luggage. These big bags must be filled with the same weight of luggage and for it, we shall supply you a steelyard which will allow you to weigh your big bags in every departure.

A donkey carries up between 30 and 40 kilos maximum (depending on the size of a donkey) , weight of bags AND child, if this weight is exceeded, it is your back which carries the rest.

View of the maximum weight that a donkey can carry, we advise generally to take a donkey for 3 to 4 persons. This rule often varies according to the age of the children accompanying the hike and with their capacity to walk enough for a long time: in every case we propose you a number of asses which, by experience, seems to us adapted to your group.

And finally, we explain you how to lead a donkey in hike, by approaching every subject necessities in the good progress of your holidays.

All this last approximately 1:30 am at 2 am that is why earlier you arrive at our farm, earlier you leave on roads!

ON PATHS...

We accompany you at the beginning of the hike, and as soon as we feel you are well in confidence with your new fellow travellers, we let you pursue your road lonely...

If you wish to go up the children on the back of donkeys and if these have their own helmet MOUNTAIN BIKE, think of taking it.

We remind you that the possible portorage of a child is made under the whole responsibility of the accompanying adults, our activity being of the transport and not the equitation. It is asked to the walkers to have an insurance persons, accidents and general civil liability.

The children of less than three years cannot rise on the back of the donkey (we provide you with one carries baby of hike if you don't have it).

If you wish to take your dog, it is completely possible provided that it is very docile; most of our donkeys are used to hike with dogs and if this one is peaceful, it will become used fast to our donkeys, but your dog will know how to hold on when it will cross our hens, sheeps and other dogs that it will meet in the stages???.Is Your dog enough pulled for the hike? Finally, you are not sure that to take your dog is a good solution, but you have no means to make it guard : we have in 5 km from our home a very comfortable hotel for dogs.

Our donkeys are kind and docile because we educated them with respectfully and patience. We tested them all on the circuits which you go through. They are professionals of the hike but it does not prevent that our donkeys remain human beings with their character and their reactions which we cannot always foresee. Even if donkeys are very well allowed drive by the children, the permanent attentiveness of an adult is necessary.

The length of the stages varies according to circuits from 12 to 18 km, that is 4 at 6 am of quiet walking.

Circuits were all tracked down by our care. You will walk a very big part of time on extremely well maintained paths, our country being crossed by hundreds of kilometres of paths.

HOW TO EQUIP YOURSELF IN BEST

Do not charge too much, calculate, please, what is really necessary for you, according to the chosen accommodation (you do not need a towels of toilet and sleeping bags if you sleep in guest houses for example).

Think in :

- Prepare your luggage so as to be able to put them and distribute them easily in big bags (sports bags or rucksacks, or even simply solid bin liners. Suitcases are to be avoided) to put the same weight in each of both bags (20 kilos maxi in every big bag if no child rises on the donkey). Think of taking a bag or several small rucksacks which you can carry on your back if the donkey is too much loaded with!
- Take a bottle of water by person minimum.
- Take limp hermetic typical tupperware for your pic nic, place settings, plates, tumblers, thermos jug for the coffee, the gourd for the wine and for the water, and to store all this a cool bag (type bag with frozen food) and 1 or 2 blue blocks to keep your pic nic at the cool (Take all this even if you foresaw that we prepare you pic nics EXCEPT WHEN you take the pic nic of the first day of hike, in which case we supply you all the material of pic nic).
- The flashlight or the frontal
- In clothes, rainy clothes or cut wind, the adequates shoes of hike with which you have already walked because the new shoes risk to hurt you very in feet, hats for youngs as for big and finally sun cream.

THE BRIONNAIS IN SOUTH BURGUNDY

" one of the regions the most close to the paradise "

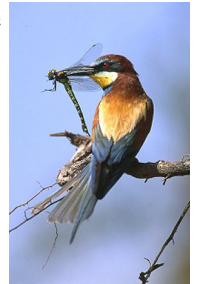
It's Jacques CLOUTEAU, a writer and big traveler with his donkey Ferdinand who so defines Brionnais. Brionnais, it is this small discreet country in the heart of France, in the South of Burgundy.



We invite you to discover this green carpet of thick herb, in the course of water.

You will also promenade on the towpaths of the canal of Roanne to Digoin, paths followed in the others time by other donkeys less fortunate than ours because they pulled barges loaded with goods while our « bougres d'ânes » will only carry your luggage.

You will follow the Paths close to the Loire and if you know how to be attentive, you can discover all the fauna and the flora which revolves there; so will meet can you be a wasp's nest during its migration towards South Africa or a family of stork. Hide you to observe the skillful martin fisherman feasting small fishes!



DAY AFTER DAY ...



The first day, you will follow the towpaths of the canal and the small path hanging on to the meanders of the Loire, there you can appreciate then completely the sweetnesses and the magnificences of this old lady, but also discover it the variety of the flora and the fauna. The circuit which you will take is situated on a classified

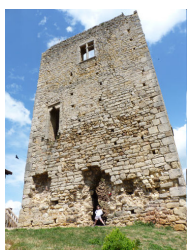
zone Natura 2000. Natura 2000 groups together natural sites, through all Europe, identified for the rarity or the fragility of the wild, animal or vegetable sorts and their environments (15 km).

The second day you will spend on the opposite bank of the Loire towards the marshes of Montceau l'étoile : This site is the first significant natural area of the department of Saone-et-Loire. One can observe a variety of flora and fauna and wetland characteristics. Two views have been built on this site with an area of 6.5 hectares:

-a bird observatory offers views confidentially about 30 species of birds that inhabit the marsh.

-an observation platform provides a global view of the wet meadow and marsh.

The animals on this site are extremely varied natural: kingfisher, Bee-eaters, sedge warbler, snipe, skunk ... There are also many species of plants: the orchid flower loose, the hotton marshes, swamps Kentucky ... The walk will end with a visit to the beautiful Romanesque church of Anzy le Duc (15 or 18 km in the plains Loire)



The third day will be devoted to the discoveries of Roman heritage of the plain of the Loire. Indeed, the paths will lead you to hidden small chapels, but also to the famous village of Semur en Brionnais, ranked as one of the most beautiful villages in France. Located on a promontory overlooking the Loire Valley, the village, the ancient fortress of the ninth century and retains some remarkable buildings such as the Romanesque church of St. Hilaire and Chateau Saint Hugues earning him of belonging to the "Federation of Cluny Sites "(12, 14 or 16 km).

On the fourth day, you descend towards the valley of the Loire to find our farm. We will again enjoy our favorite places as the trail ponds: a delight in nature and tranquility. Then if you wish, in the last kilometers you can visit one of the most beautiful Romanesque churches in the region: the church and the museum Iguerande "reflection brionnais" that will tell you the history of our beloved country. Then it will be up to you to tell us your story (7, 12 or 14 km)!



IT'S TIME TO REST

We suggest you accommodations or points of bivouac for every evening. Then you have to choose the one who is the best for you.

Every accommodation was selected for the quality of its rooms, the conviviality of the owners, but also because it can welcome comfortably your donkeys.

Every accommodation proposes the breakfast, the supper and the pic nics for noon.

If you bivouac or if you wish prepare yourself your pic nic, regrettably, the small grocer's shops of village are more and more rare. **It will be necessary to plan to have always two days of provisionings minimum.**

We can prepare you the pic nic of the first day with vegetables, fruits and eggs of our farm and other farm produces of very good quality. Prices: 7,50 € a person.

Stage	Accommodations	Address	Prices
First night	Close to the Loire, in the village restored house, 4 guest rooms including 1 of 60 m ² with mezzanine (loft) for 4 people, 2 ch. of 2 pers., 1 ch. of 3 pers. Bathroom and toilet, independent for each room. Common room. Terrace equipped with garden. Above ground swimming pool and bowls on site.	Mme Humbert LE BOURG 71110 BOURG-LE-COMTE Tèl :03 85 25 27 05	Night and breakfast : 2 persons : 55 € Supplementary persons : 10 € Diner : 21 € / adult 10 € /child til 10 years Pic nic : 8 €
	2 rooms have been decorated in an old renovated barn, located on the circuit of Romanesque churches, and on the road to St Jacques de Compostela, close to a 300 km network of canals and rivers. 2 spacious bedrooms with private bathrooms, lounge, library, large living together. Large green flowers, garden, terrace, Host table on reservation	Mme HUGUET Christine Domaine La Croix ouquet 03130 AVRILLY Tèl :04 70 55 35 10	Night and breakfast : 65 € for two persons Supplementary persons : 15 € Diner : 18 € adult et 8 € for child under 12 years old Pic nic : 8 €
Second night	B&B in a very old farm next to a small castle. The bedroom are really beautiful and the view on the river Arconce is really nice.	Mme BARATHON « Le Lac » 71110 ANZY LE DUC Tel : 03 85 25 39 93	Price for one night (included breakfast): Two persons : 60 € Supplementary person : 18 € Dinner : 20 € / person 10 € / child Pic nic : 12 €/person
Third night	B&B in an old farm. « la vie en roses » means life in roses... and in green because the view on the field is really incredible!	La vie en roses Le perret 71340 IGUERANDE Tel : 03 85 84 10 85	Price for one night (included breakfast): Two persons : 55 € Supplementary : 10 € Diner : 20 € / adult 10 €/child Pic nic : 7,50 €
	One night in a trailer, original and stylish accommodation. In the countryside, with magnificent views over the hills of Drill, surrounded by horses, a stage for any smooth feel otherwise. Swimming on site Go visit the website	Roulotte du Brionnais Aline MURET Les Coindrys 71110 IGUERANDE Tel : 03 85 25 11 28	Prices per night (to know what period you're appointment on the website): High season: 110 € night Mid season: 79 € per night Low season: 69 € per night Breakfast: 8 € adult and 6 € children Dinner: 18 € adult and 12 € child Picnic: 7 € per person

These prices are given as a rough guide and don't engage Bougres d'ânes. Prices will be confirmed to you during your booking.

ACCOMODATIONS FOR HIKES « IN THE COURSE OF THE WATER »



Françoise MARTEAU : ARTAIX :

http://www.artisans-en-brionnais.com/ceramiques_ajourees-francoise_marteau.html



Camping de la Motte aux Merles :

<http://www.brionnais-tourisme.fr/hebergements-en-brionnais-descriptif.php?idl=25&idv=&id=7>



Mme HUMBERT : BOURG LE COMTE :

<http://www.commeuncoquenpate.com/>



Mme HUGUET : AVRILLY :

<http://www.gites-de-france-allier.com/chambre-d-hote-huguet-christine-a-avrilly-dans-SOLOGNE-ET-VAL-DE-BESBRE-G25711.html>



Mme BARATHON : ANZY LE DUC :

<http://www.chambres-dhotes-anzy-le-duc.fr/>



LA VIE EN ROSES : IGUERANDE :

<http://www.gites71.com/chambre-d-hote-majan-luc-a-iguerande-dans-CHAROLAIS-BRIONNAIS-2421.html>

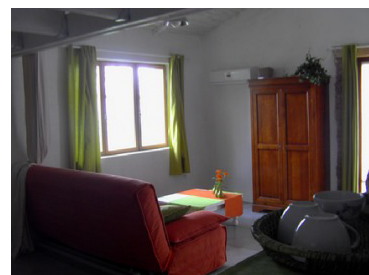


ROULOTTE DU BRIONNAIS : IGUERANDE

<http://roulottes-brionnais.com/>

**FOR DAY BEFORE THE HIKE AND LAST DAY OF HIKE,
YOU CAN SLEEP ON OUR FARM : BOUGRES D'ÂNES :
MELAY :**

<http://www.bougresdanes.com/chambre/>



TO COME TO OUR FARM

We are at 1h30 am of the North West of Lyon and at 2 am in the western South of Dijon.
We are at 9 am of London, 7 am Brussels, 4:30 am Paris, 3 hours of Geneva.

FOR OUR FRIENDS from Switzerland:

In Geneva, you take A40 in the direction of MACON, BOURG EN BRESSE.

Arrived around Mâcon, (it is the end of A40) you go to take the Highway A6 on some kilometres by taking the direction of Lyon, Marseille (you entered on the Highway A6 Mâcon Nord), then you take out the first exit, the exit Mâcon sud where you will take the direction of Charolles, Paray le Monial, Montceau les mines. And then follow the direction Paray le monial only.

In paray le Monial, take the direction of Roanne up to **the village of Iguerande**.

FOR THOSE WHO WOULD ARRIVE BY THE HIGHWAY A31 AND A6 (OF BRUSSELS, BRUGGE, LYON)

If you arrive from the North of France, you go out to Chalon sur Saône, to take the exit chalon sud and to take the direction of Montceau les mines; arrived at the level of Montceau les mines, take the direction of Roanne until Digoin. Arrived at Digoin continue to follow the direction of Roanne and this until you arrived at **the village of Iguerande**.

If you arrive from the South of France, go out to the exit Mâcon sud and take the direction of Charolles, Paray le Monial, Montceau les mines. And then follow the direction Paray le monial only.

In paray le Monial, take the direction of Roanne up to **the village of Iguerande**.

FROM PARIS

Take the A6 and after the A77 in the direction of Nevers, Montargis and exit in the direction of Magny court, Moulin. Arrived to Moulin, take the direction of Digoin. Arrived to Digoin, take the direction of Roanne til **the village of Iguerande** (about 30 km after).

FOR THE OTHERS WHO DO NOT PASS BY THE HIGHWAY:

If you manage from the South, take the direction of Roanne and in the entrance of Roanne, take the exit Montceau les mines, Paray le Monial, always to follow these two directions up to **the village of Iguerande** (approximately 18 km after).

If you arrive from the North, take the direction of Digoin where you will take the direction of Roanne. Follow this direction up to **the village of Iguerande** (approximately 30 km after).

FOR EVERYBODY WHEN YOU ARRIVE AT THE VILLAGE OF IGUERANDE:

At Iguerande there is a traffic light (not two!); if you come from Roanne (from the South), at the traffic light turn to the left in the direction of Melay, if you come from Digoin (from the North), on the traffic light to the right in the direction of Melay.

Continue quite straight ahead: you pass above the Loire. You arrive then at a crossroads where you set to the right in the direction of Melay. You follow then the canal which is on your left on approximately 1,5 km and you will take the first small bridge on your left (at the top of a hogback). Cross the canal in passing on this small bridge (panel « location d'ânes ») and park you at once to the left after the bridge. The farm is on your right-hand side.

BOUGRES D'ÂNES
Ferme de Putinat
71340 MELAY
Tel : 03 85 84 16 70
Email : bougresdane@aol.com

Possibility of arriving by train: ask us for the necessities informations

